



36 St. Martins Drive, Desford

Leicester



36 St. Martins Drive

Desford, Leicester

Council Tax band: B

Tenure: Freehold

EPC Energy Efficiency Rating: C

EPC Environmental Impact Rating:

- ESTABLISHED SEMI DETACHED FAMILY HOME
- LOUNGE & KITCHEN/DINING ROOM
- THREE BEDROOMS & FAMILY BATHROOM
- POPULAR VILLAGE LOCATION
- GAS HEATING WITH DESIGNER RADIATORS & DOUBLE GLAZING
- EASILY MAINTAINABLE REAR GARDEN WITH FEATURE LOG CABIN
- AMPLE PARKING
- EASY ACCESS LOCAL FACILITIES



DETAILED ACCOMODATIONS

Sealed double glazed composite door leading to;

ENTRANCE HALL

Stairs leading to first floor accommodation, designer radiator, UPVC sealed double glazed window with white wooden blind, tiled flooring, fitted cupboard.

LOUNGE

14' 8" x 11' 10" (4.47m x 3.61m)

UPVC sealed double glazed bay window to front aspect with white wooden blinds, designer radiator, TV point.

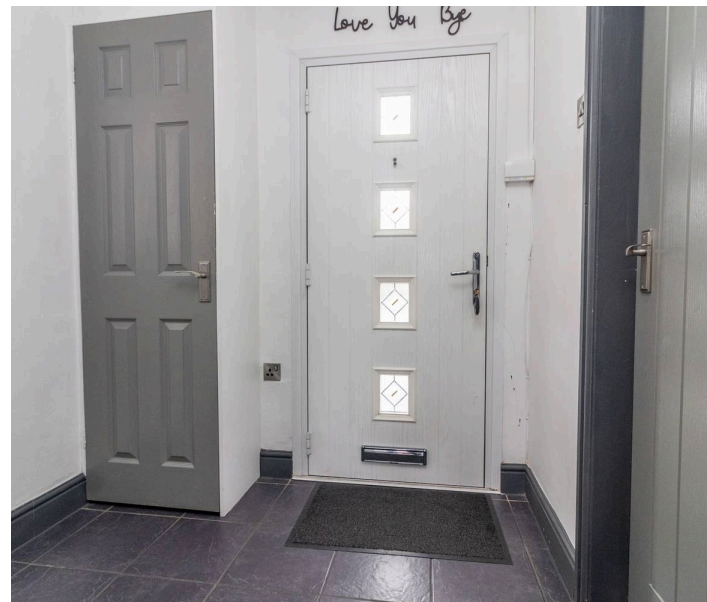
KITCHEN/DINING ROOM

18' 8" x 9' 1" (5.69m x 2.77m)

Comprising sink unit with cupboards under, matching base units with work surfaces over, drawers and cupboards under, complementary wall mounted eye level cupboards, tiled splash backs, plumbing for washing machine, dual aspect UPVC sealed double glazed windows, door to rear garden, shelved pantry, tiled flooring, radiator.

FIRST FLOOR LANDING

Access to loft space, boiler cupboard.



BEDROOM 1

12' 4" x 10' 9" (3.76m x 3.28m)

Designer radiator, UPVC sealed double glazed window with white wooden blind.

BEDROOM 2

10' 9" x 10' 5" (3.28m x 3.17m)

Designer radiator, UPVC sealed double glazed window with white wooden blind, built in cupboard.

BEDROOM 3

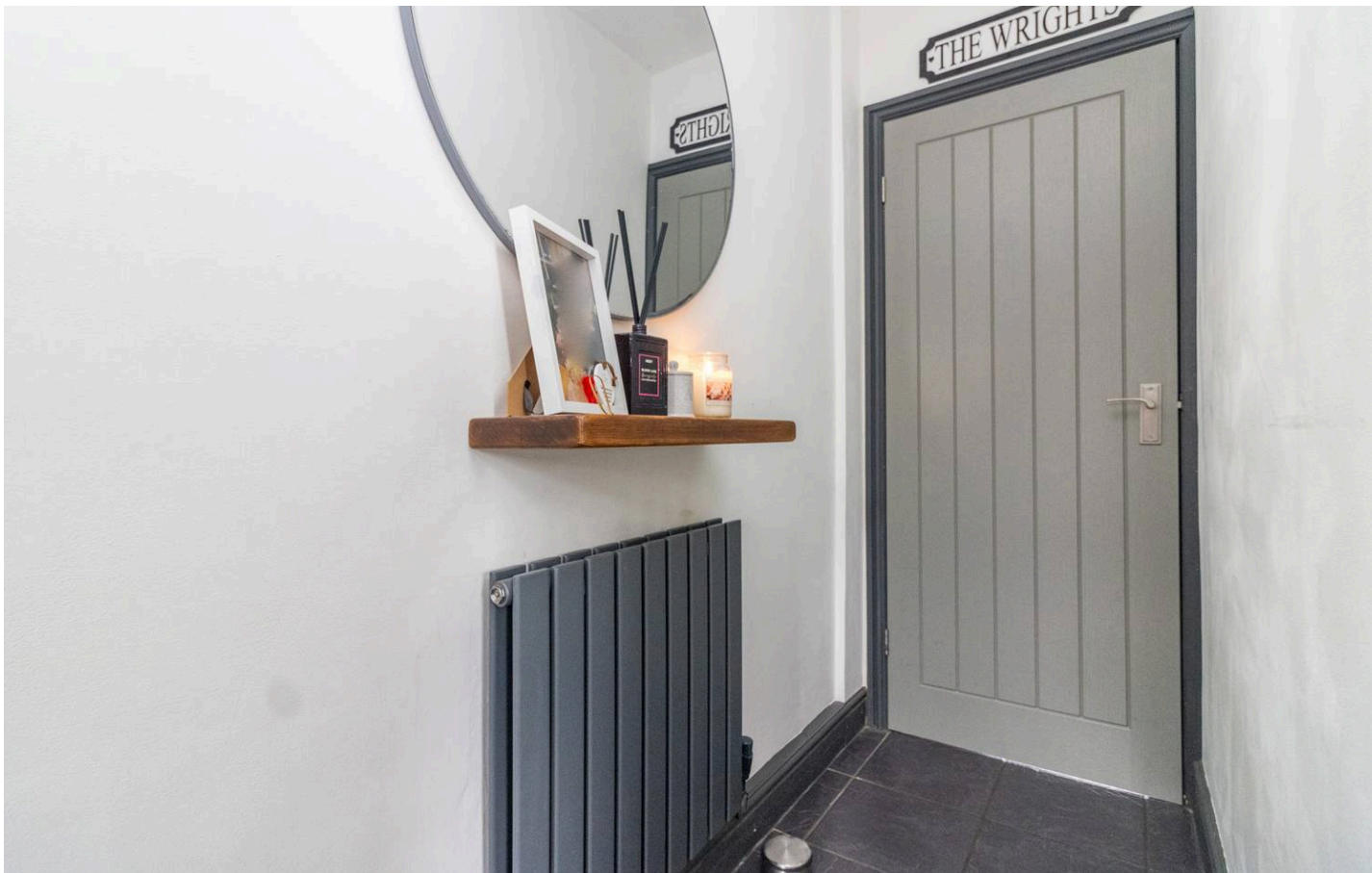
7' 6" x 6' 2" (2.29m x 1.88m)

Designer radiator, UPVC sealed double glazed window with white wooden blind, fitted cupboard.

BATHROOM

7' 5" x 5' 5" (2.26m x 1.65m)

Three piece suite comprising panel bath with shower



DETAILED ACCOMODATIONS

Sealed double glazed composite door leading to;

ENTRANCE HALL

Stairs leading to first floor accommodation, designer radiator, UPVC sealed double glazed window with white wooden blind, tiled flooring, fitted cupboard.

LOUNGE

14' 8" x 11' 10" (4.47m x 3.61m)

UPVC sealed double glazed bay window to front aspect with white wooden blinds, designer radiator, TV point.

KITCHEN/DINING ROOM

18' 8" x 9' 1" (5.69m x 2.77m)

Comprising sink unit with cupboards under, matching base units with work surfaces over, drawers and cupboards under, complementary wall mounted eye level cupboards, tiled splash backs, plumbing for washing machine, dual aspect UPVC sealed double glazed windows, door to rear garden, shelved pantry, tiled flooring, radiator.

FIRST FLOOR LANDING

Access to loft space, boiler cupboard.

BEDROOM 1

12' 4" x 10' 9" (3.76m x 3.28m)

Designer radiator, UPVC sealed double glazed window with white wooden blind.

BEDROOM 2

10' 9" x 10' 5" (3.28m x 3.17m)

Designer radiator, UPVC sealed double glazed window with white wooden blind, built in cupboard.

BEDROOM 3

7' 6" x 6' 2" (2.29m x 1.88m)

Designer radiator, UPVC sealed double glazed window with white wooden blind, fitted cupboard.

BATHROOM

7' 5" x 5' 5" (2.26m x 1.65m)

Three piece suite comprising panel bath with shower





DETAILED ACCOMODATIONS

Sealed double glazed composite door leading to;

ENTRANCE HALL

Stairs leading to first floor accommodation, designer radiator, UPVC sealed double glazed window with white wooden blind, tiled flooring, fitted cupboard.

LOUNGE

14' 8" x 11' 10" (4.47m x 3.61m)

UPVC sealed double glazed bay window to front aspect with white wooden blinds, designer radiator, TV point.

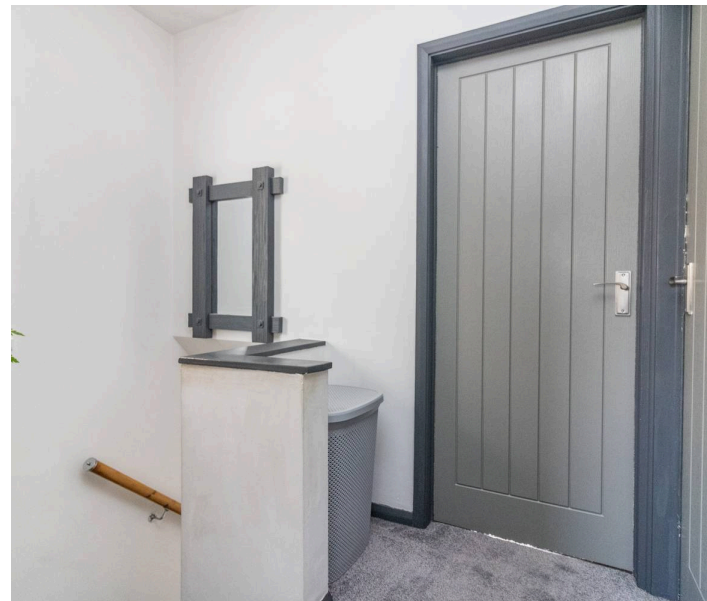
KITCHEN/DINING ROOM

18' 8" x 9' 1" (5.69m x 2.77m)

Comprising sink unit with cupboards under, matching base units with work surfaces over, drawers and cupboards under, complementary wall mounted eye level cupboards, tiled splash backs, plumbing for washing machine, dual aspect UPVC sealed double glazed windows, door to rear garden, shelved pantry, tiled flooring, radiator.

FIRST FLOOR LANDING

Access to loft space, boiler cupboard.



BEDROOM 1

12' 4" x 10' 9" (3.76m x 3.28m)

Designer radiator, UPVC sealed double glazed window with white wooden blind.

BEDROOM 2

10' 9" x 10' 5" (3.28m x 3.17m)

Designer radiator, UPVC sealed double glazed window with white wooden blind, built in cupboard.

BEDROOM 3

7' 6" x 6' 2" (2.29m x 1.88m)

Designer radiator, UPVC sealed double glazed window with white wooden blind, fitted cupboard.

BATHROOM

7' 5" x 5' 5" (2.26m x 1.65m)

Three piece suite comprising panel bath with shower



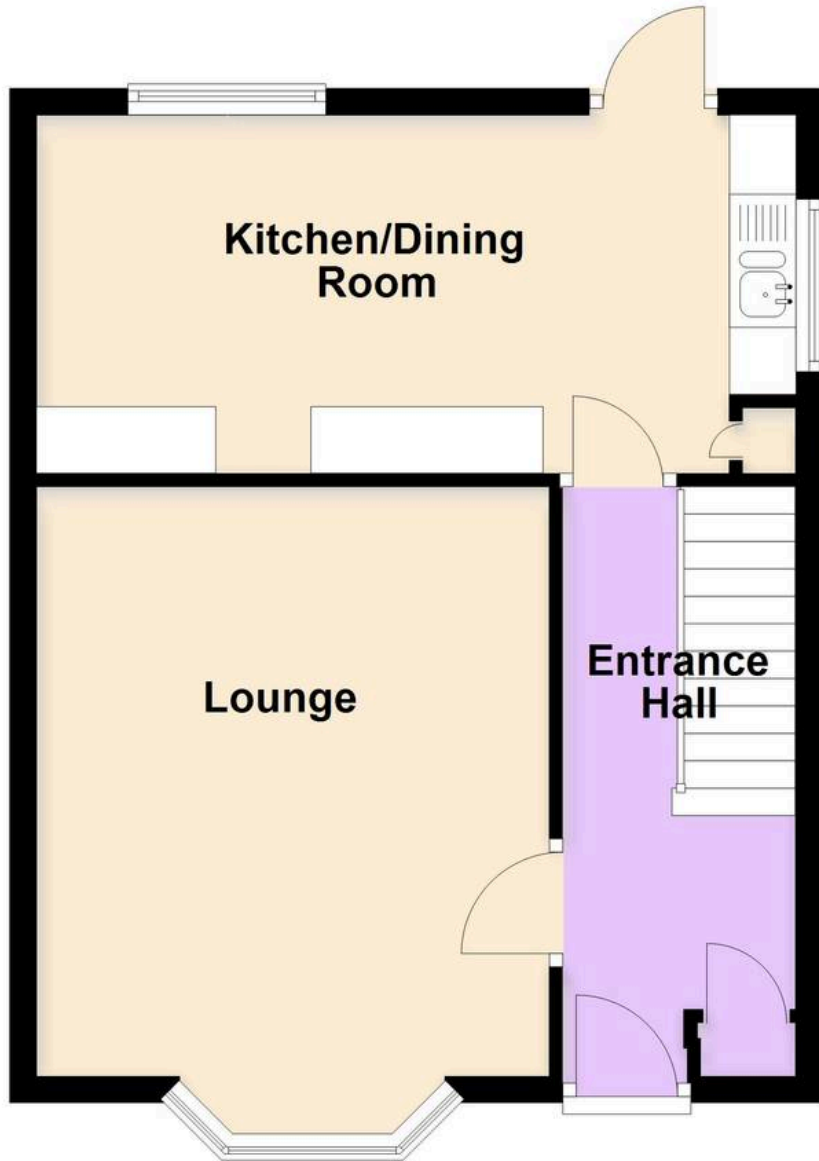
GARDEN

rear

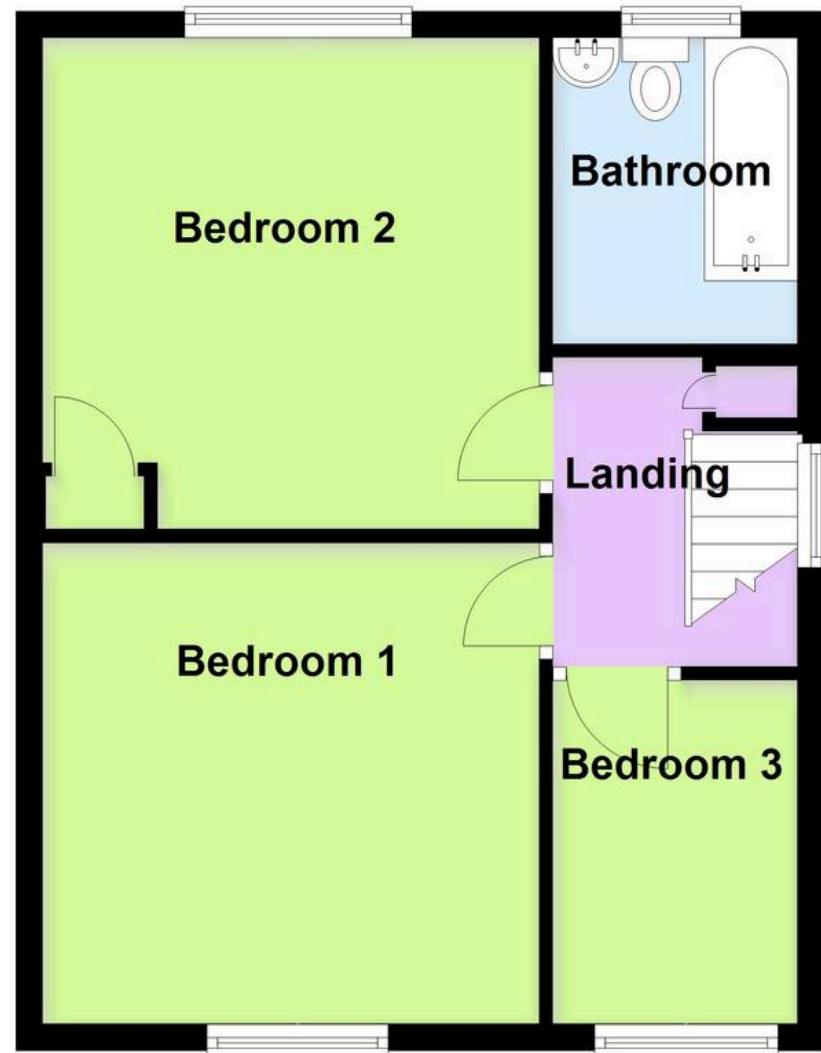
DRIVEWAY



Ground Floor



First Floor





Moore & York

61 Granby Street, Leicester - LE1 6FB

0116 2558666

sales@mooreandyork.co.uk

www.mooreandyork.co.uk

Measurements or distances are approximate. The text, photographs and plans are for guidance only and are not necessarily comprehensive. It should not be assumed that the property has all necessary planning, building regulation or other consents. Moore & York have not tested any services, equipment or facilities. Purchasers must satisfy themselves by inspection or otherwise. We have not made any investigations into the existence or otherwise of any issues concerning pollution of land, air or water contamination and the purchaser is responsible for making his own enquiries in this regard.