



16 Alma Road, Hinckley

Hinckley

£150,000



## 16 Alma Road

Hinckley

Council Tax band: A

Tenure: Freehold

EPC Energy Efficiency Rating: D

EPC Environmental Impact Rating: E

- VICTORIAN MID TERRACE HOME
- TWO RECEPTION ROOMS & KITCHEN
- TWO DOUBLE BEDROOMS & BATHROOM
- EASILY MAINTAINABLE GARDEN
- GAS HEATING & DOUBLE GLAZING
- IDEAL INVESTMENT
- NO ONWARD CHAIN
- EASY ACCESS LOCAL FACILITIES



## **DETAILED ACCOMMODATION**

UPVC door leading to;

### **LOUNGE**

11' 5" x 11' 2" (3.48m x 3.40m)

Radiator, UPVC sealed double glazed window, display fire surround.

### **INNER HALLWAY**

Under stairs recess.

### **DINING ROOM**

12' 0" x 11' 4" (3.66m x 3.45m)

Enclosed stairwell to first floor, radiator, UPVC sealed double glazed window, display fire surround.

### **KITCHEN**

9' 0" x 6' 4" (2.74m x 1.93m)

Single drainer sink unit cupboards, base unit draws and cupboards under, complementing wall mounted eye level units, UPVC sealed double glazed window and door to rear aspect, plumbing for washing machine.

### **FIRST FLOOR LANDING**

### **BEDROOM 1**

13' 2" x 11' 2" (4.01m x 3.40m)

Radiator, tilt and turn UPVC sealed double glazed window, over stairs cupboard

### **BEDROOM 2**

12' 2" x 10' 3" (3.71m x 3.12m)

Radiator, UPVC sealed double glazed window.

### **BATHROOM**

12' 0" x 6' 6" (3.66m x 1.98m)

Three piece suite comprising panel bath with shower attachment over, pedestal wash hand basin and low level WC, radiator, UPVC sealed double glazed window, tiled splash backs, airing cupboard housing central heating boiler.

### **OUTSIDE**

Easily maintainable patio area to rear. Brick built





## DETAILED ACCOMMODATION

UPVC door leading to;

### LOUNGE

11' 5" x 11' 2" (3.48m x 3.40m)

Radiator, UPVC sealed double glazed window, display fire surround.

### INNER HALLWAY

Under stairs recess.

### DINING ROOM

12' 0" x 11' 4" (3.66m x 3.45m)

Enclosed stairwell to first floor, radiator, UPVC sealed double glazed window, display fire surround.

### KITCHEN

9' 0" x 6' 4" (2.74m x 1.93m)

Single drainer sink unit cupboards, base unit draws and cupboards under, complementing wall mounted eye level units, UPVC sealed double glazed window and door to rear aspect, plumbing for washing machine.

### FIRST FLOOR LANDING

#### BEDROOM 1

13' 2" x 11' 2" (4.01m x 3.40m)

Radiator, tilt and turn UPVC sealed double glazed window, over stairs cupboard

#### BEDROOM 2

12' 2" x 10' 3" (3.71m x 3.12m)

Radiator, UPVC sealed double glazed window.

#### BATHROOM

12' 0" x 6' 6" (3.66m x 1.98m)

Three piece suite comprising panel bath with shower attachment over, pedestal wash hand basin and low level WC, radiator, UPVC sealed double glazed window, tiled splash backs, airing cupboard housing central heating boiler.

#### OUTSIDE

Easily maintainable patio area to rear. Brick built





#### **DETAILED ACCOMMODATION**

UPVC door leading to;

#### **LOUNGE**

11' 5" x 11' 2" (3.48m x 3.40m)

Radiator, UPVC sealed double glazed window, display fire surround.

#### **INNER HALLWAY**

Under stairs recess.

#### **DINING ROOM**

12' 0" x 11' 4" (3.66m x 3.45m)

Enclosed stairwell to first floor, radiator, UPVC sealed double glazed window, display fire surround.

#### **KITCHEN**

9' 0" x 6' 4" (2.74m x 1.93m)

Single drainer sink unit cupboards, base unit draws and cupboards under, complementing wall mounted eye level units, UPVC sealed double glazed window and door to rear aspect, plumbing for washing machine.

#### **FIRST FLOOR LANDING**

#### **BEDROOM 1**

13' 2" x 11' 2" (4.01m x 3.40m)

Radiator, tilt and turn UPVC sealed double glazed window, over stairs cupboard

#### **BEDROOM 2**

12' 2" x 10' 3" (3.71m x 3.12m)

Radiator, UPVC sealed double glazed window.

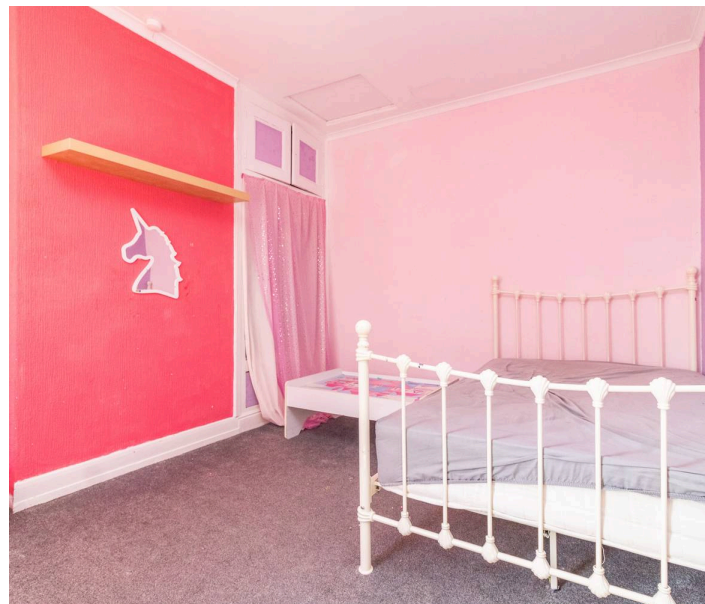
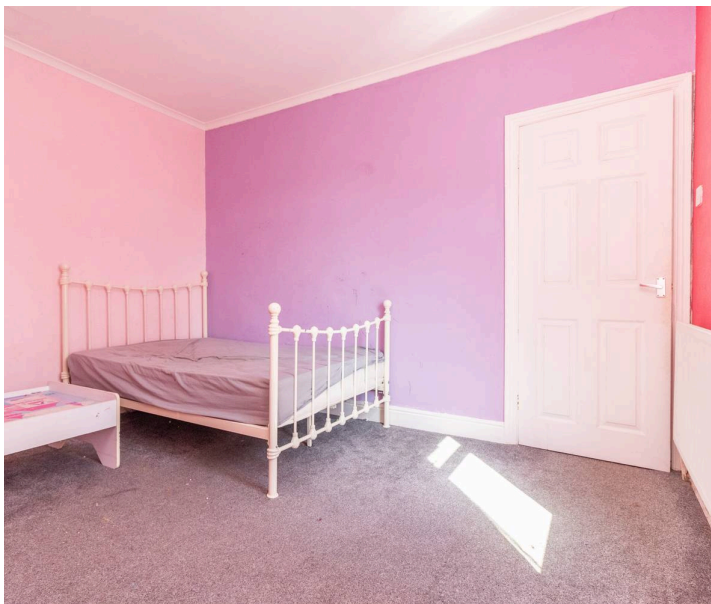
#### **BATHROOM**

12' 0" x 6' 6" (3.66m x 1.98m)

Three piece suite comprising panel bath with shower attachment over, pedestal wash hand basin and low level WC, radiator, UPVC sealed double glazed window, tiled splash backs, airing cupboard housing central heating boiler.

#### **OUTSIDE**

Easily maintainable patio area to rear. Brick built





**REAR GARDEN**

**ON STREET**

1 Parking Space



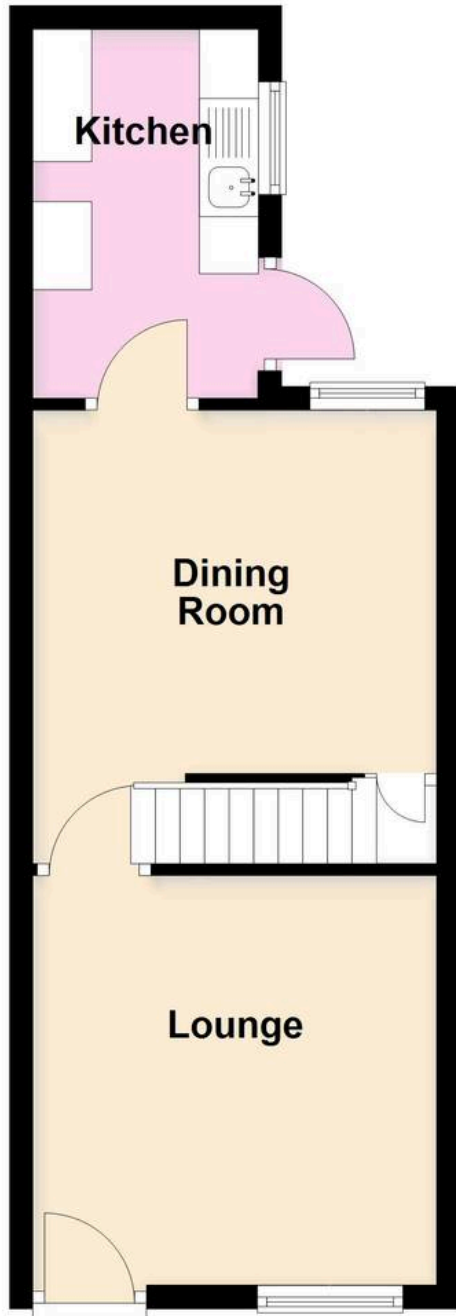
**Ground Floor**



**First Floor**



**Ground Floor**



**First Floor**





## Moore & York

61 Granby Street, Leicester - LE1 6FB

0116 2558666

[sales@mooreandyork.co.uk](mailto:sales@mooreandyork.co.uk)

[www.mooreandyork.co.uk](http://www.mooreandyork.co.uk)

Measurements or distances are approximate. The text, photographs and plans are for guidance only and are not necessarily comprehensive. It should not be assumed that the property has all necessary planning, building regulation or other consents. Moore & York have not tested any services, equipment or facilities. Purchasers must satisfy themselves by inspection or otherwise. We have not made any investigations into the existence or otherwise of any issues concerning pollution of land, air or water contamination and the purchaser is responsible for making his own enquiries in this regard.