



71 Somerset Drive, Glenfield
£465,000



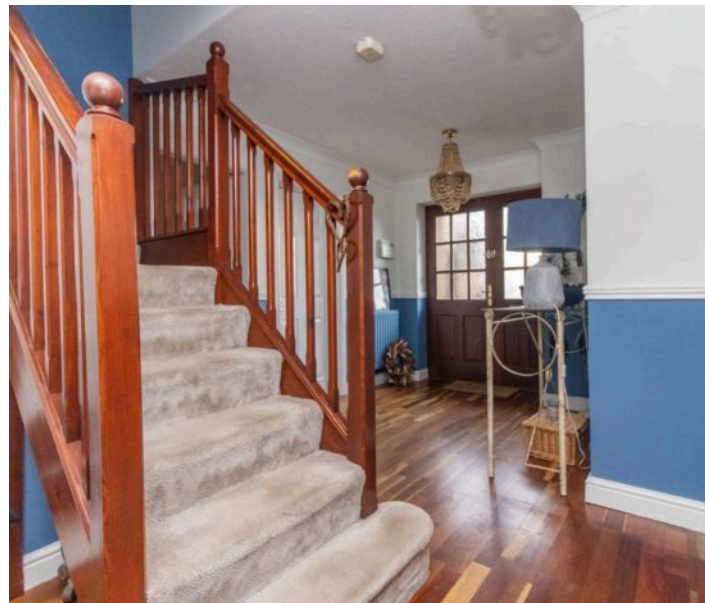
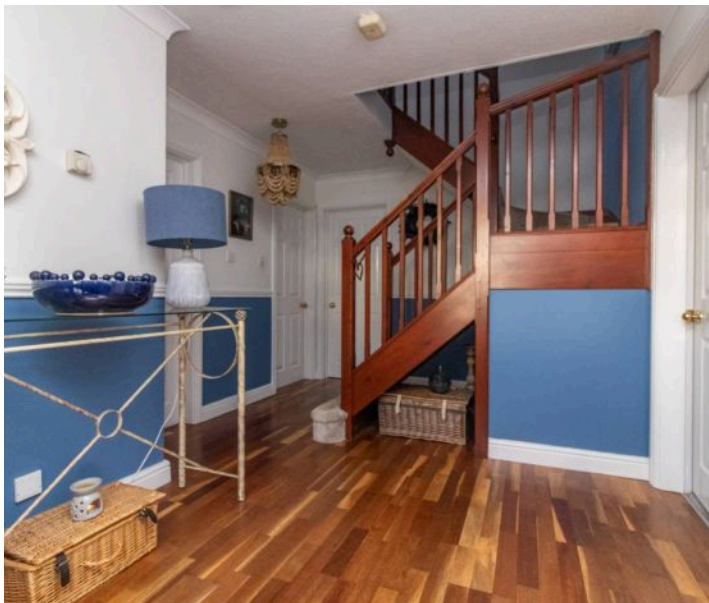
71 Somerset Drive

Glenfield, Leicester

Council Tax band: E

Tenure: Freehold

- DECEPTIVELY SPACIOUS INDIVIDUALLY DESIGNED DETACHED FAMILY HOME
- SPACIOUS LOUNGE
- WELL FITTED KITCHEN/DINING ROOM & UTILITY ROOM
- THREE BEDROOMS & BATHROOM TO GROUND FLOOR
- MASTER BEDROOM & FOUR PIECE BATHROOM TO FIRST FLOOR
- ENCLOSED GARDENS
- AMPLE PARKING & DETACHED DOUBLE GARAGE
- SOUGHT AFTER LOCATION
- EASY ACCESS LOCAL FACILITIES





DETAILED ACCOMODATION

Hardwood and sealed double glazed door with storm canopy over and matching side panel leading to;

RECEPTION HALL

Parquet style flooring, stairwell leading to first floor accommodation, double radiator, under stairs storage cupboard.

LOUNGE

20' 11" x 15' 7" (6.38m x 4.75m)

Radiators, sealed double glazed French doors to rear garden, display fire and surround, TV point.

KITCHEN/DINING ROOM

19' 7" x 16' 6" (5.97m x 5.03m)

Well fitted in an extensive range of units comprising inset one and a half bowl sink unit with mixer tap over and cupboards under, matching range of base units with Corian work surfaces over incorporating drainer and matching upturn and drawers and cupboards under, complementary wall mounted eye level cupboards, glazed display cabinets, inset wine racks, range cooker space with extractor fan over set in display hood, Corian breakfast bar, sealed double glazed window and doors to rear garden, spotlights, tiled flooring.

UTILITY ROOM

8' 4" x 6' 8" (2.54m x 2.03m)

Inset sink with mixer tap over, Corian work surface incorporating drainer and matching upturn with utility space under with plumbing for washing machine, fridge/freezer space, wall mounted Worcester boiler, tiled flooring, sealed double glazed window.

BEDROOM 2

12' 3" x 11' 9" (3.73m x 3.58m)

Radiator, sealed double glazed window.

BEDROOM 3

9' 4" x 8' 6" (2.85m x 2.59m)

Radiator, sealed double glazed window.

BEDROOM 4

9' 4" x 8' 6" (2.85m x 2.59m)

Radiator, sealed double glazed window, built in wardrobe.





DETAILED ACCOMODATION

Hardwood and sealed double glazed door with storm canopy over and matching side panel leading to;

RECEPTION HALL

Parquet style flooring, stairwell leading to first floor accommodation, double radiator, under stairs storage cupboard.

LOUNGE

20' 11" x 15' 7" (6.38m x 4.75m)

Radiators, sealed double glazed French doors to rear garden, display fire and surround, TV point.

KITCHEN/DINING ROOM

19' 7" x 16' 6" (5.97m x 5.03m)

Well fitted in an extensive range of units comprising inset one and a half bowl sink unit with mixer tap over and cupboards under, matching range of base units with Corian work surfaces over incorporating drainer and matching upturn and drawers and cupboards under, complementary wall mounted eye level cupboards, glazed display cabinets, inset wine racks, range cooker space with extractor fan over set in display hood, Corian breakfast bar, sealed double glazed window and doors to rear garden, spotlights, tiled flooring.

UTILITY ROOM

8' 4" x 6' 8" (2.54m x 2.03m)

Inset sink with mixer tap over, Corian work surface incorporating drainer and matching upturn with utility space under with plumbing for washing machine, fridge/freezer space, wall mounted Worcester boiler, tiled flooring, sealed double glazed window.

BEDROOM 2

12' 3" x 11' 9" (3.73m x 3.58m)

Radiator, sealed double glazed window.

BEDROOM 3

9' 4" x 8' 6" (2.85m x 2.59m)

Radiator, sealed double glazed window.

BEDROOM 4

9' 4" x 8' 6" (2.85m x 2.59m)

Radiator, sealed double glazed window, built in wardrobe.





DETAILED ACCOMODATION

Hardwood and sealed double glazed door with storm canopy over and matching side panel leading to;

RECEPTION HALL

Parquet style flooring, stairwell leading to first floor accommodation, double radiator, under stairs storage cupboard.

LOUNGE

20' 11" x 15' 7" (6.38m x 4.75m)

Radiators, sealed double glazed French doors to rear garden, display fire and surround, TV point.

KITCHEN/DINING ROOM

19' 7" x 16' 6" (5.97m x 5.03m)

Well fitted in an extensive range of units comprising inset one and a half bowl sink unit with mixer tap over and cupboards under, matching range of base units with Corian work surfaces over incorporating drainer and matching upturn and drawers and cupboards under, complementary wall mounted eye level cupboards, glazed display cabinets, inset wine racks, range cooker space with extractor fan over set in display hood, Corian breakfast bar, sealed double glazed window and doors to rear garden, spotlights, tiled flooring.

UTILITY ROOM

8' 4" x 6' 8" (2.54m x 2.03m)

Inset sink with mixer tap over, Corian work surface incorporating drainer and matching upturn with utility space under with plumbing for washing machine, fridge/freezer space, wall mounted Worcester boiler, tiled flooring, sealed double glazed window.

BEDROOM 2

12' 3" x 11' 9" (3.73m x 3.58m)

Radiator, sealed double glazed window.

BEDROOM 3

9' 4" x 8' 6" (2.85m x 2.59m)

Radiator, sealed double glazed window.

BEDROOM 4

9' 4" x 8' 6" (2.85m x 2.59m)

Radiator, sealed double glazed window, built in wardrobe.







REAR GARDEN

enclosed

DOUBLE GARAGE

2 Parking Spaces

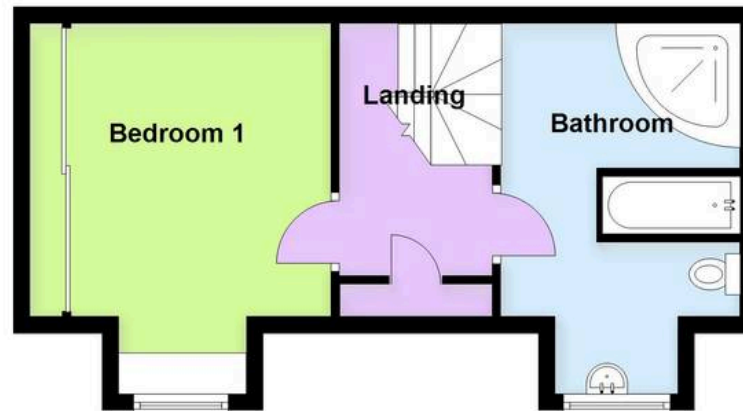




Ground Floor



First Floor





Moore & York

61 Granby Street, Leicester - LE1 6FB

0116 2558666

sales@mooreandyork.co.uk

www.mooreandyork.co.uk

Measurements or distances are approximate. The text, photographs and plans are for guidance only and are not necessarily comprehensive. It should not be assumed that the property has all necessary planning, building regulation or other consents. Moore & York have not tested any services, equipment or facilities. Purchasers must satisfy themselves by inspection or otherwise. We have not made any investigations into the existence or otherwise of any issues concerning pollution of land, air or water contamination and the purchaser is responsible for making his own enquiries in this regard.